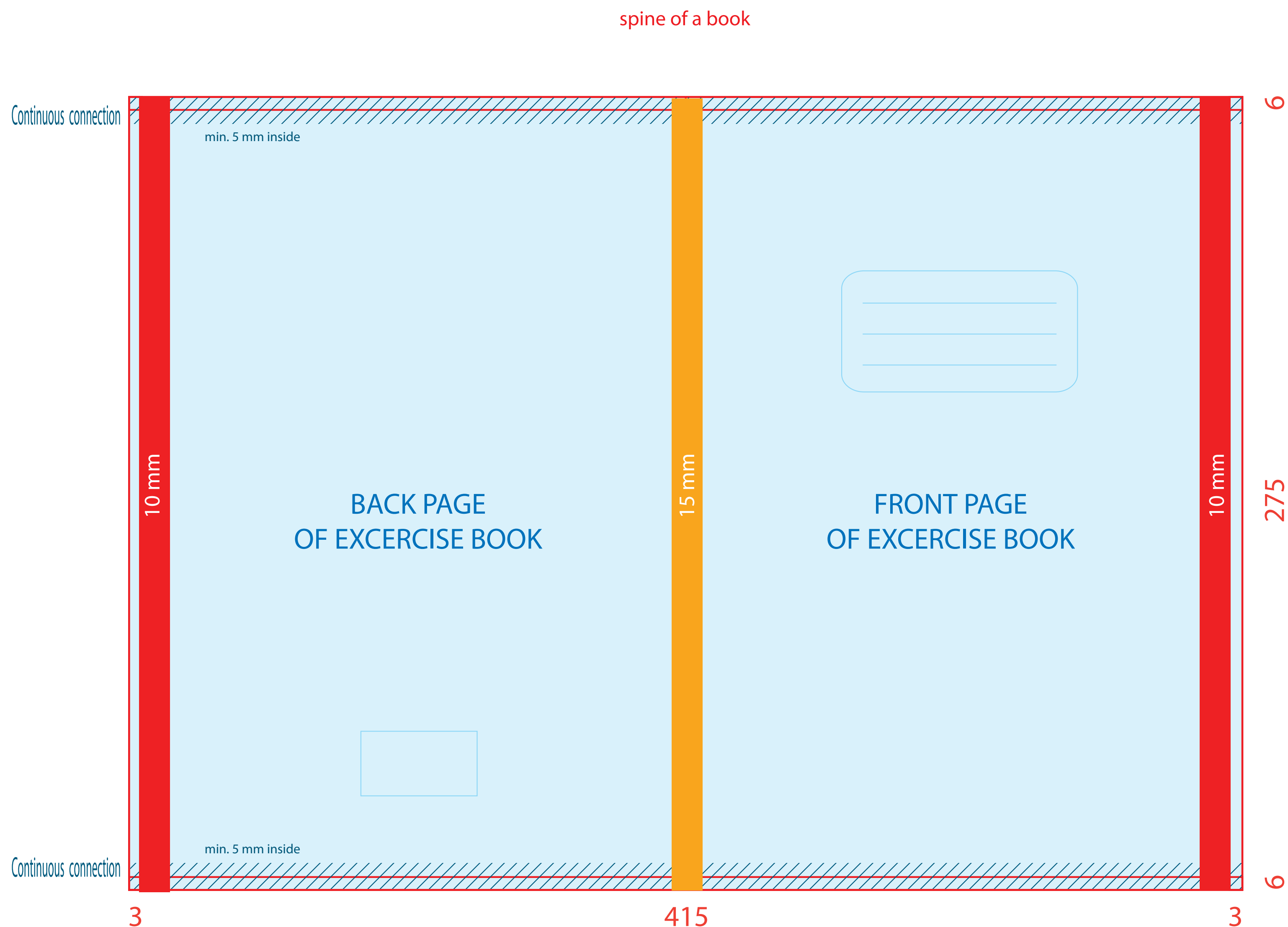


Drawing and dimensions of artwork for cover of A4 exercise books

Net Artwork is 415 x 275 mm (+6 mm for trimmed edges above and below and +3 mm right and left
– it means, the whole artwork is 421 x 287 mm)

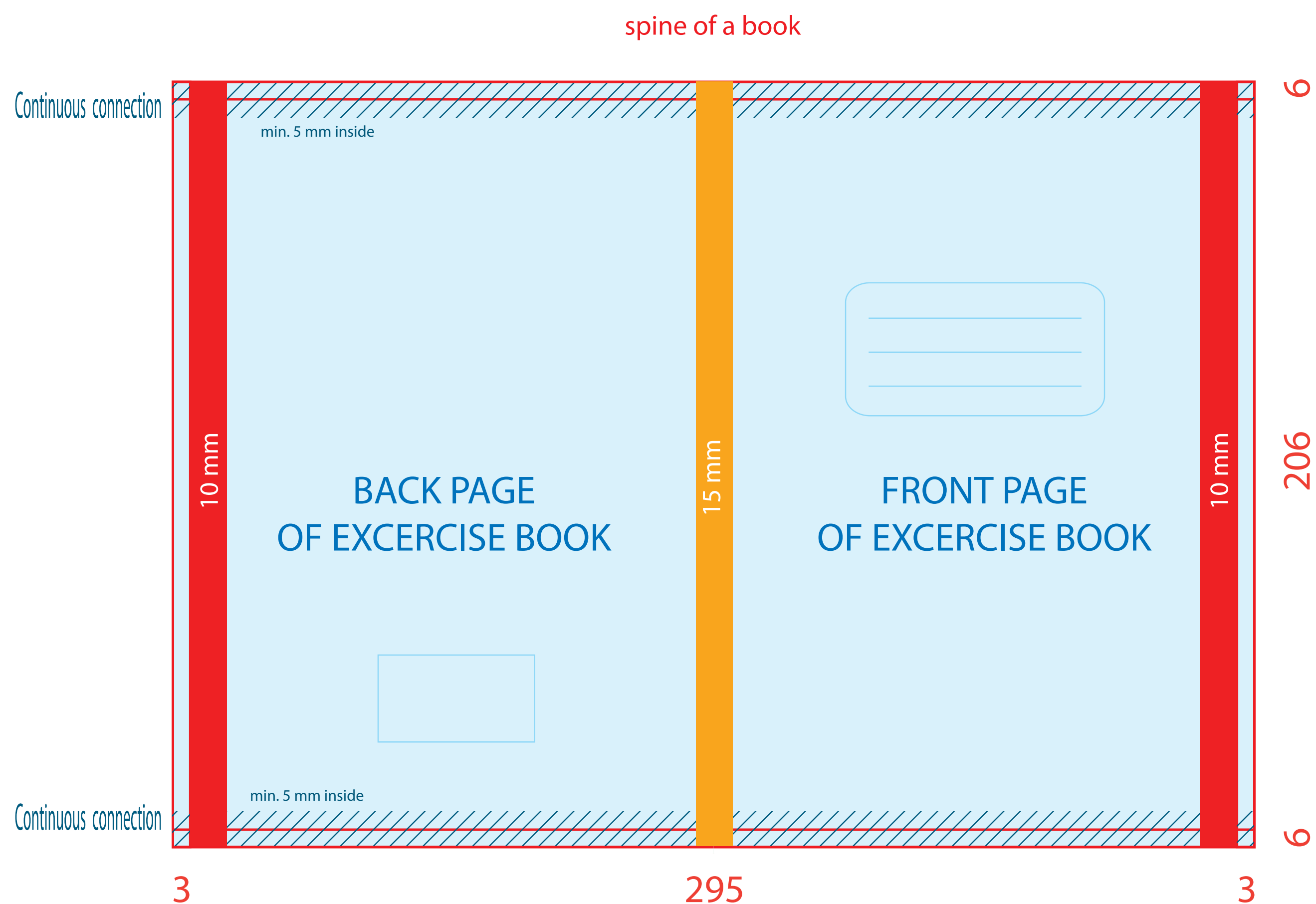


The red vertical bars to the LEFT and RIGHT indicate the safe area. **DO NOT PLACE** graphic elements here that you do not want to cut off.

The ORANGE bar indicates a zone where **NO GRAPHIC** elements that will be affected by folding inaccuracy may be placed.

Drawing and dimensions of artwork for cover of A5 exercise books

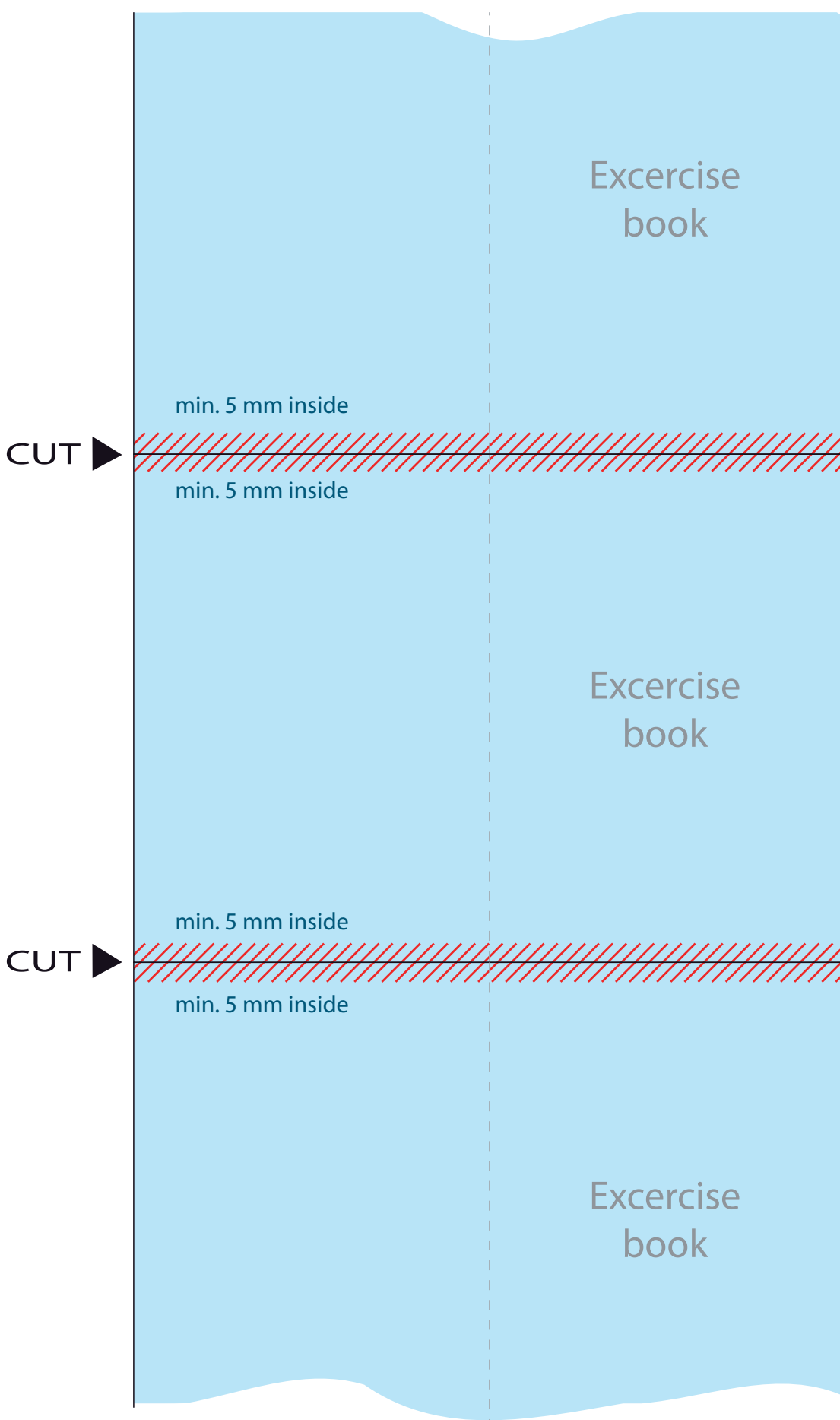
Net Artwork is 295 x 206 mm (+6 mm for trimmed edges above and below and +3 mm right and left – it means, the whole artwork is 301 x 218 mm)



The red vertical bars to the LEFT and RIGHT indicate the safe area. **DO NOT PLACE** graphic elements here that you do not want to cut off.

The ORANGE bar indicates a zone where **NO GRAPHIC** elements that will be affected by folding inaccuracy may be placed.

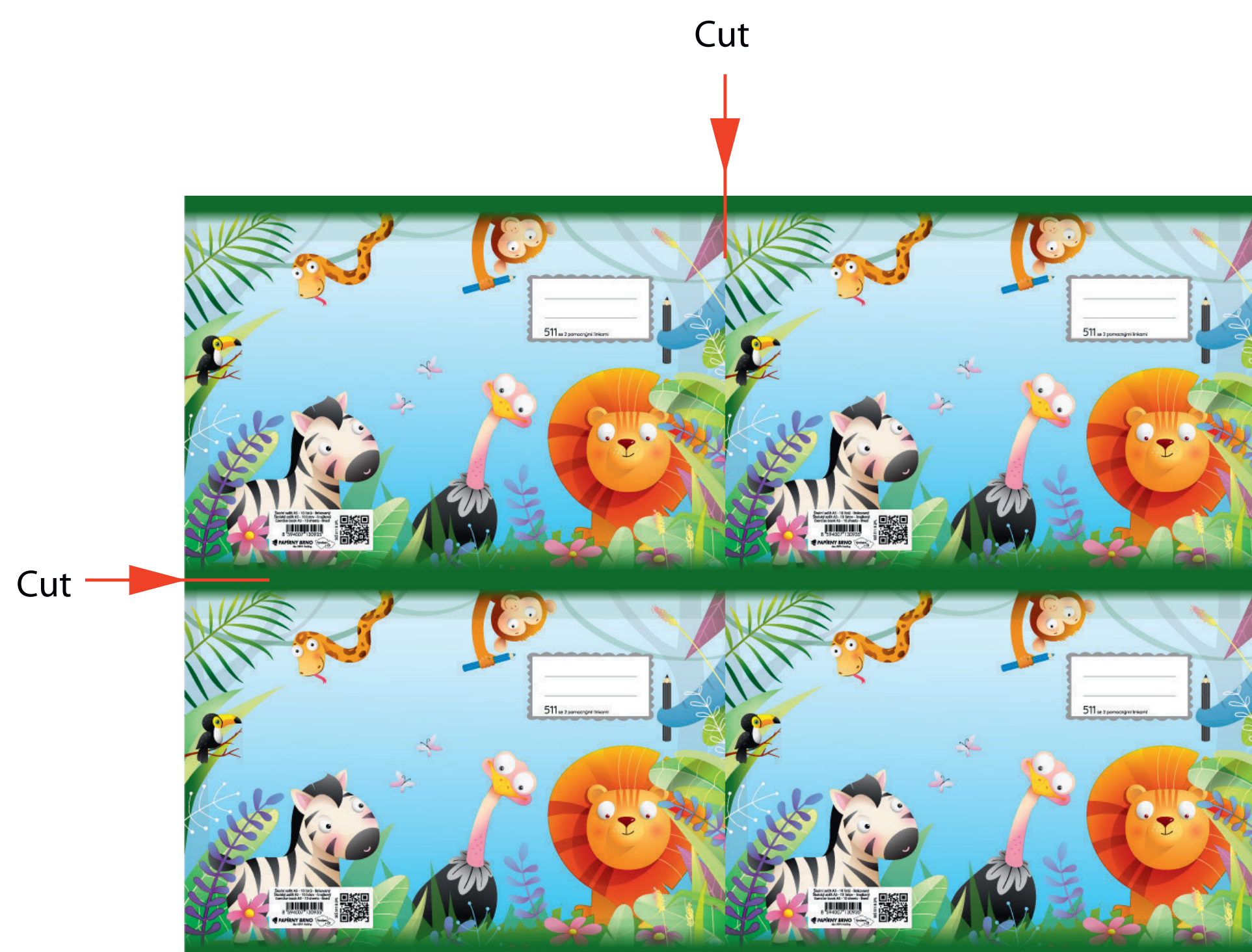
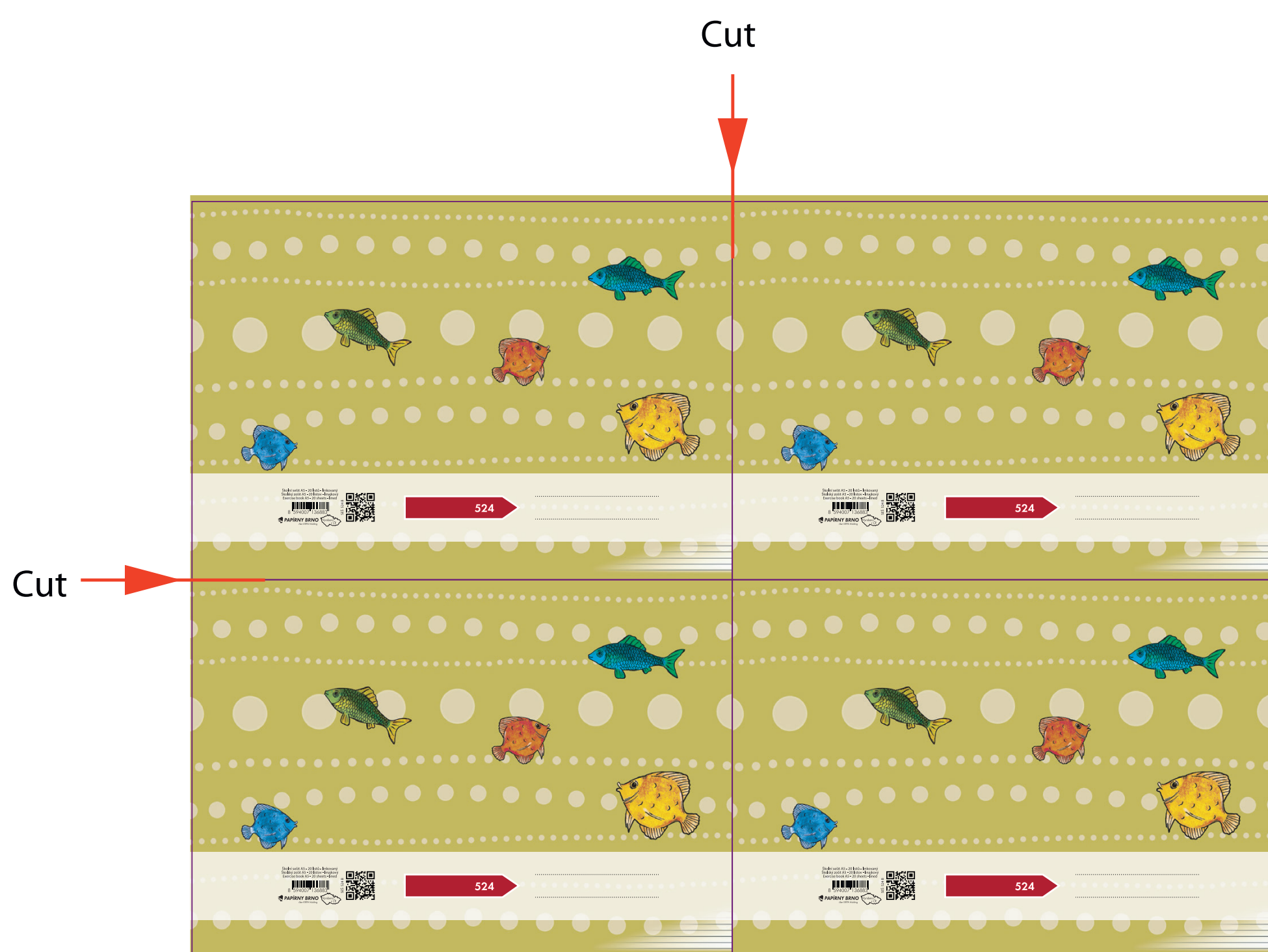
By the reason of technologic processing in more-production must be the graphical motive of excercises book's cover solved in such way, to artwork (net dimension) in a place of connection single excercise books (cuts) fluently concur at each other.



Marked out by hatching means necessity of fluent connection of art work - by the reason of possible cut deviation in vertical direction.



Examples how to solve connection of exercise books covers' art work



CORRECT!

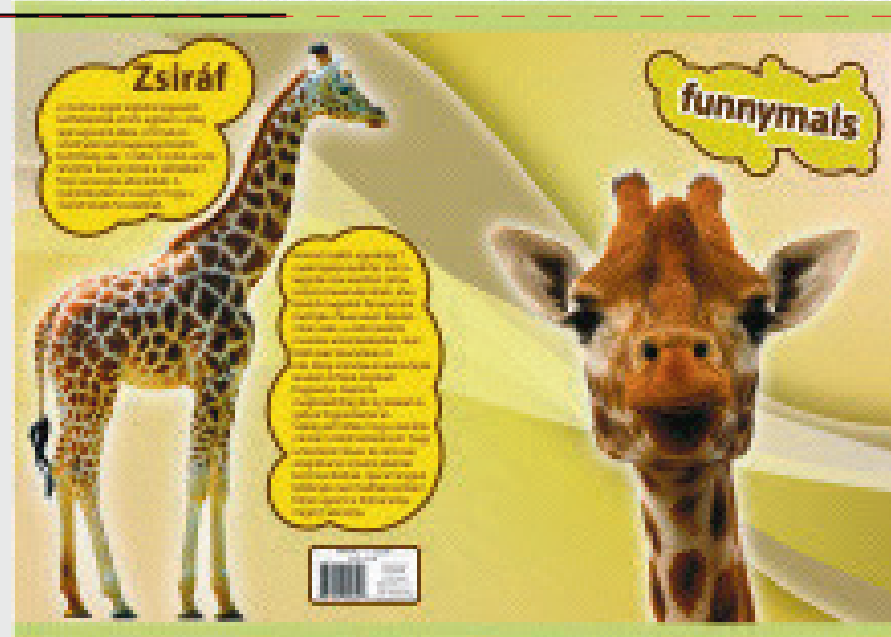
O.K.



O.K.



O.K.



INCORRECT!

!



!



!

