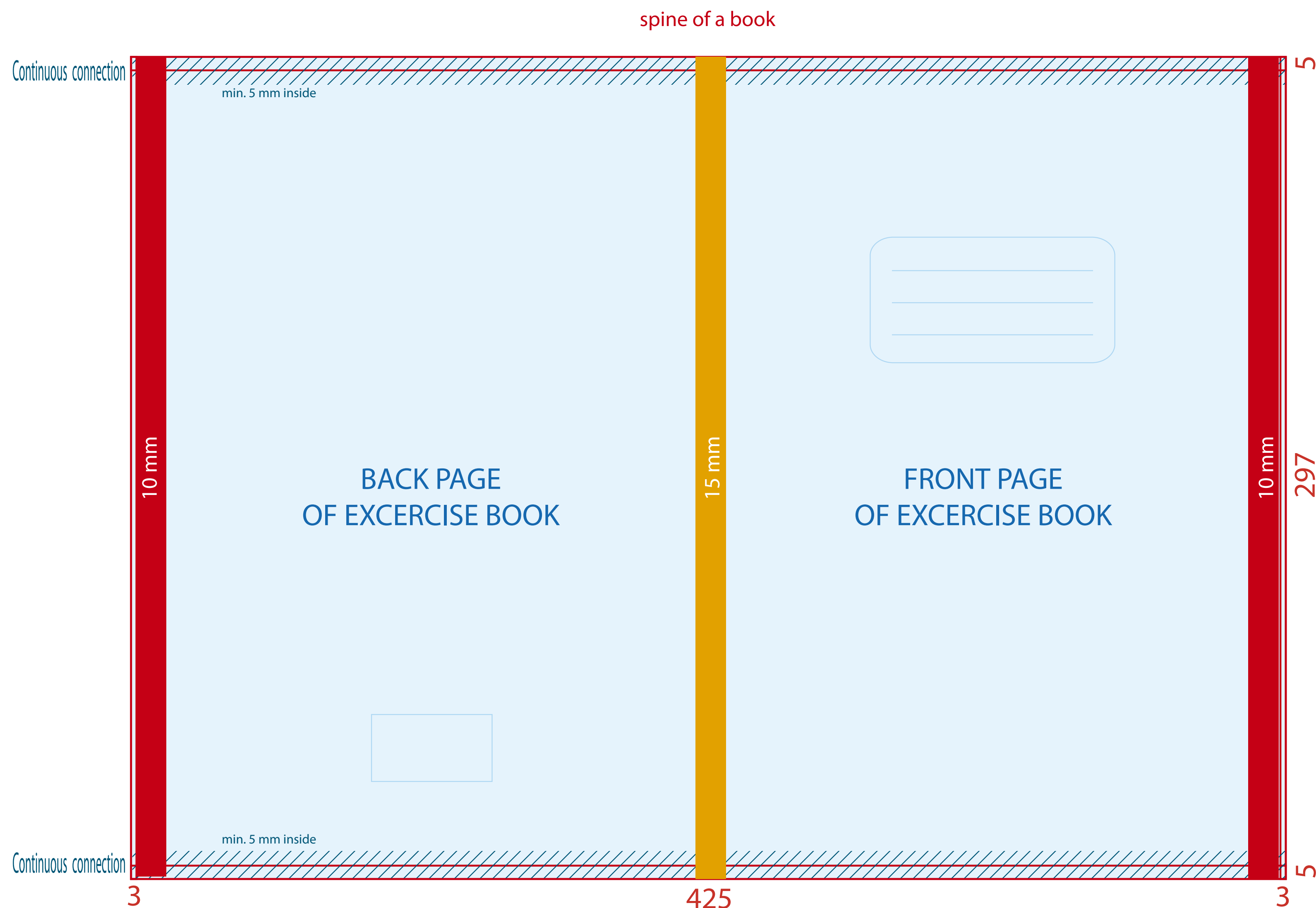


Drawing and dimensions of artwork for cover of A4 exercise books

Trim box is 425 x 297 mm

add 5 mm bleed head and foot and 3 mm bleed right and left - total dimensions is 431 x 307 mm



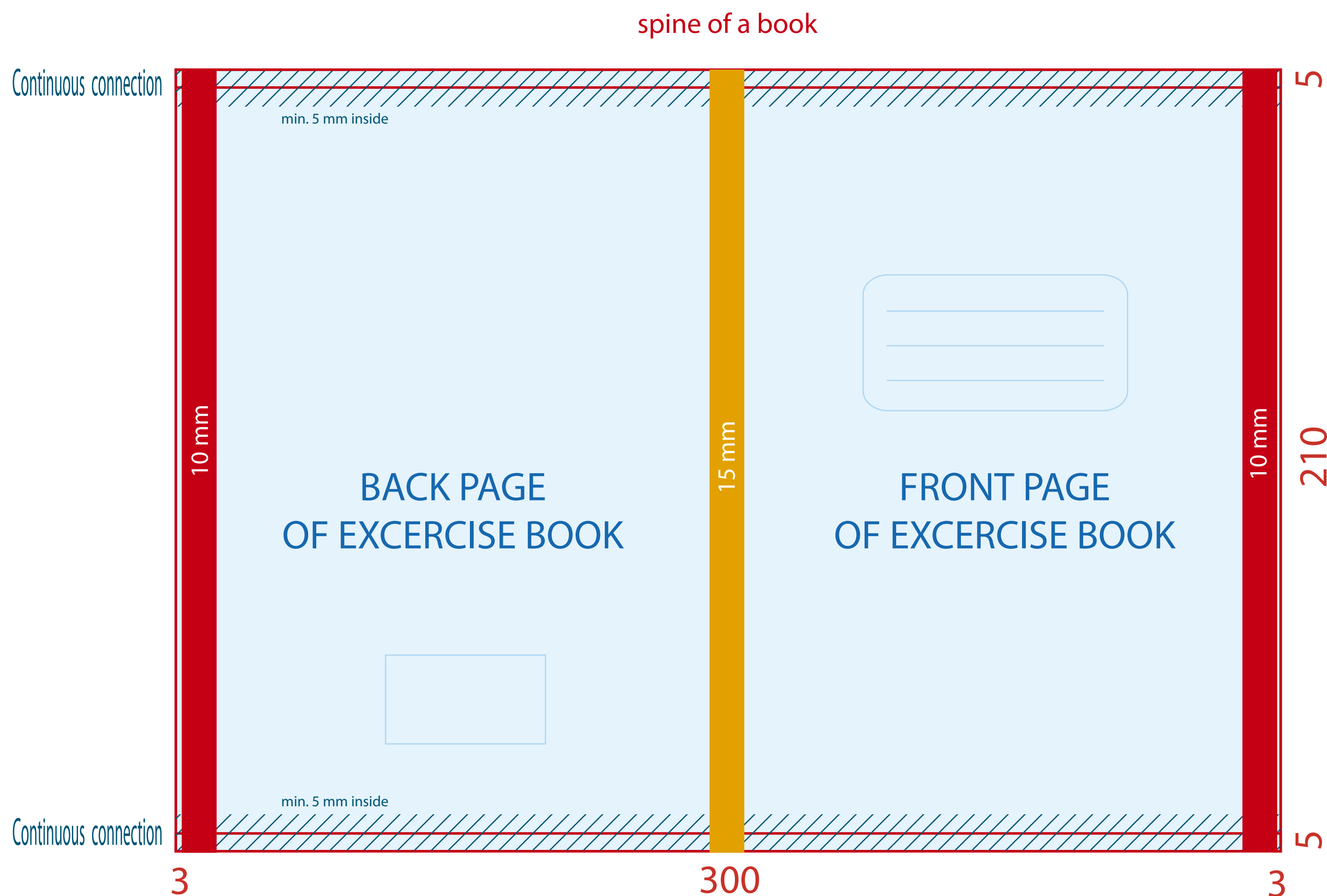
The red vertical bars to the LEFT and RIGHT indicate the safe area. **DO NOT PLACE** graphic elements here that you do not want to cut off.

The ORANGE bar indicates a zone where **NO GRAPHIC** elements that will be affected by folding inaccuracy may be placed.

Drawing and dimensions of artwork for cover of A5 exercise books 10 + 20 sheets

Trim box is 300 x 210 mm

add 5 mm bleed head and foot and 3 mm bleed right and left - total dimensions is 306 x 220 mm



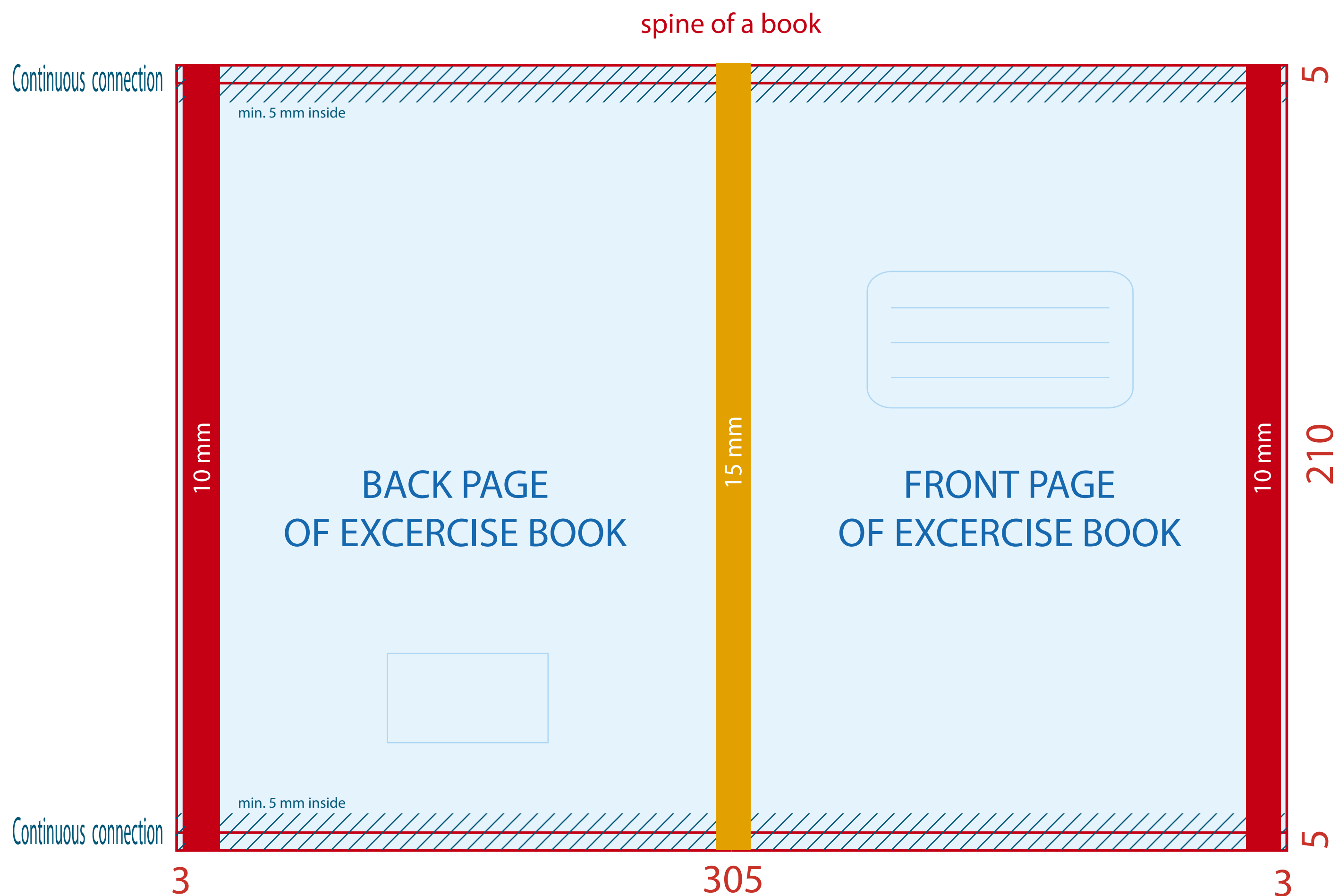
The red vertical bars to the LEFT and RIGHT indicate the safe area. **DO NOT PLACE** graphic elements here that you do not want to cut off.

The ORANGE bar indicates a zone where **NO GRAPHIC** elements that will be affected by folding inaccuracy may be placed.

Drawing and dimensions of artwork for cover of A5 exercise books 40 + 60 sheets

Trim box is 305 x 210 mm

add 5 mm bleed head and foot and 3 mm bleed right and left - total dimensions is 311 x 220 mm



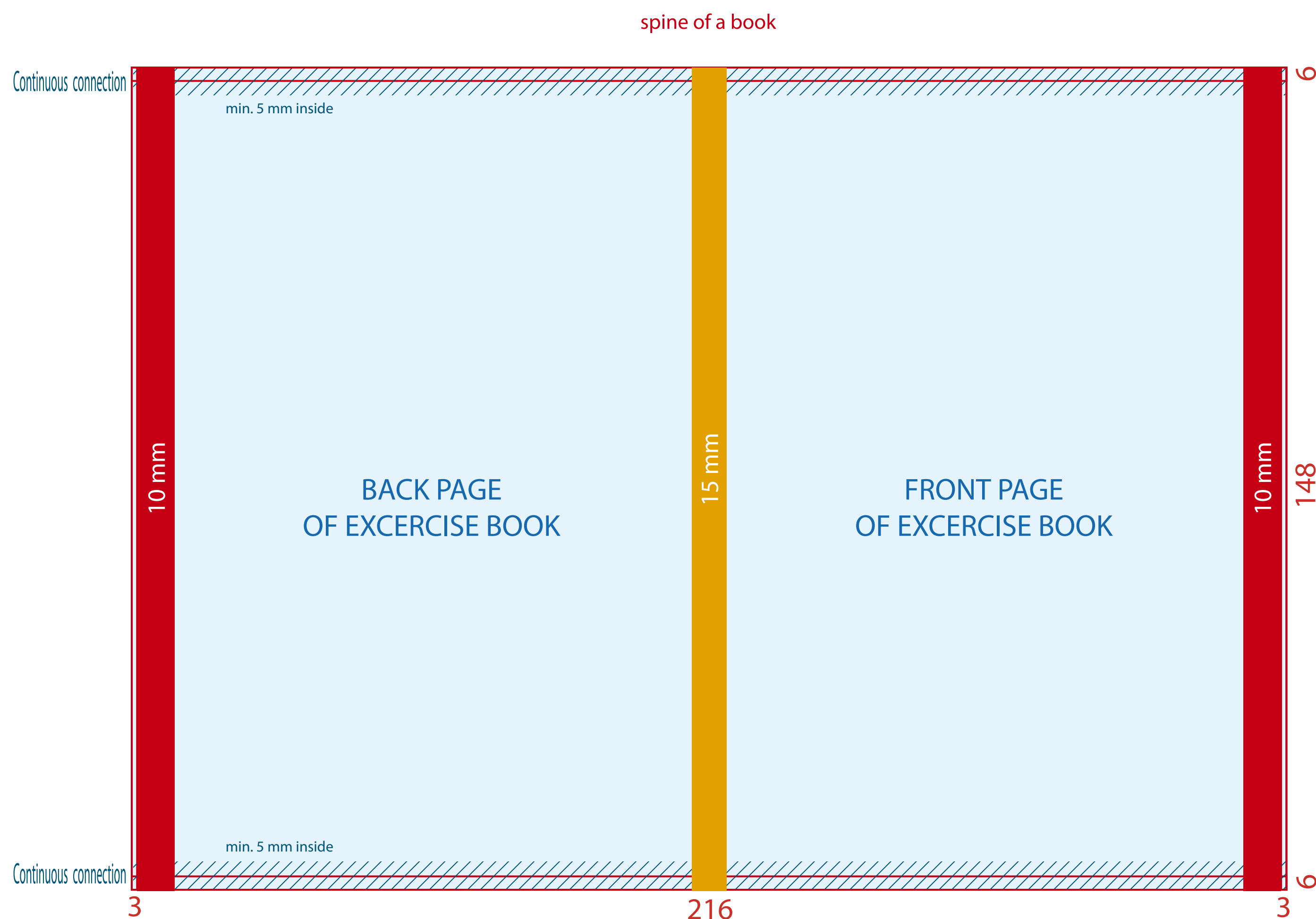
The red vertical bars to the LEFT and RIGHT indicate the safe area. **DO NOT PLACE** graphic elements here that you do not want to cut off.

The ORANGE bar indicates a zone where **NO GRAPHIC** elements that will be affected by folding inaccuracy may be placed.

Drawing and dimensions of artwork for cover of A6 exercise books

Trim box is 216 x 148 mm

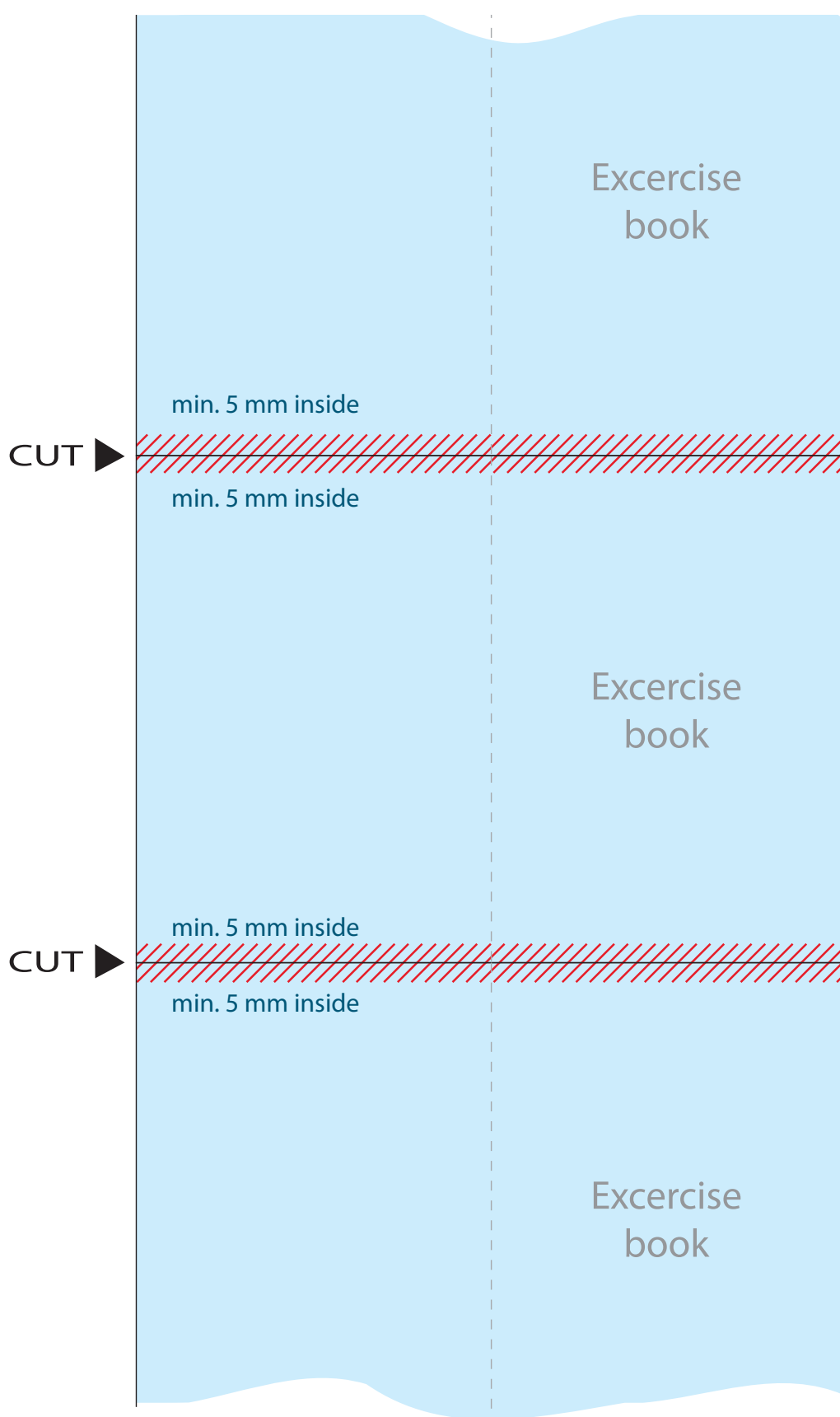
add 5 mm bleed head and foot and 3 mm bleed right and left - total dimensions is 222 x 160 mm




The red vertical bars to the LEFT and RIGHT indicate the safe area. **DO NOT PLACE** graphic elements here that you do not want to cut off.

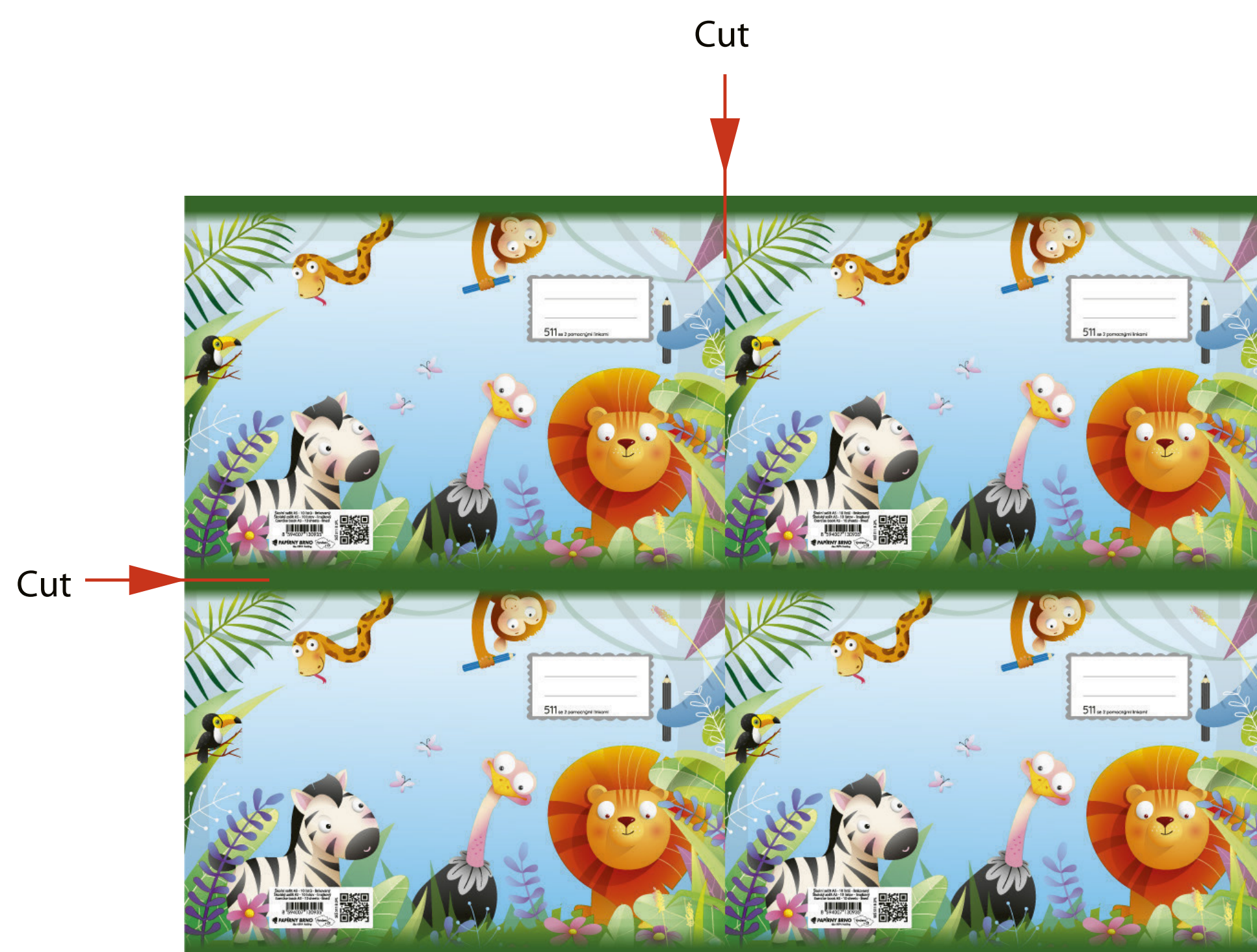
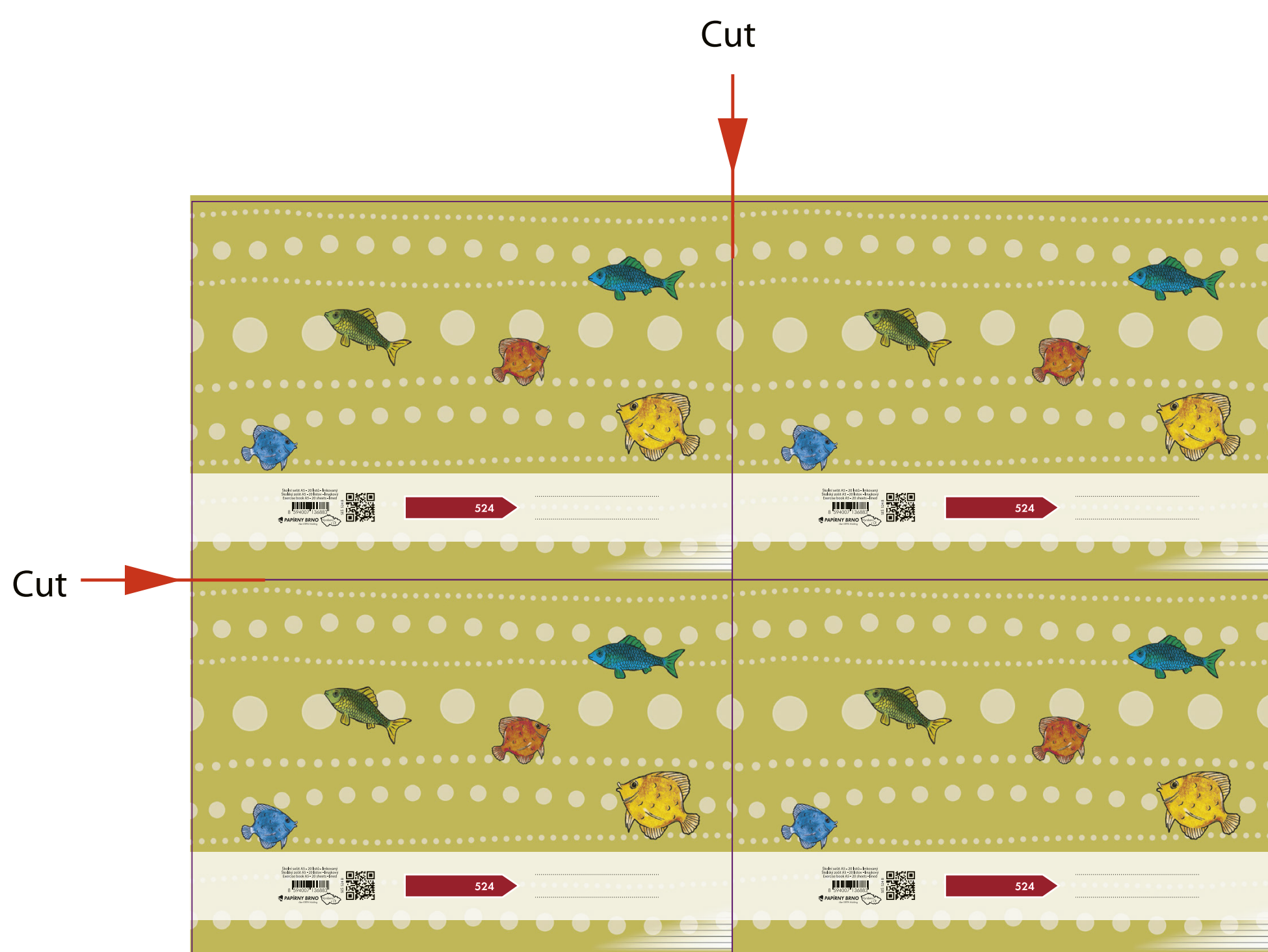
The ORANGE bar indicates a zone where **NO GRAPHIC** elements that will be affected by folding inaccuracy may be placed.

For the reason of technological processing in multiple production, the graphic motif of the cover of the exercise book must be solved in such a way that the drawing (pure format) at the point of connection of the individual exercise book (- cut) seamlessly follows each other.



 hatched marking indicates the necessity of continuous connection of the drawing - due to possible deviation of the cut in the vertical direction

Examples how to solve connection of exercise books covers' art work



CORRECT!

INCORRECT!

O.K.



O.K.



O.K.

